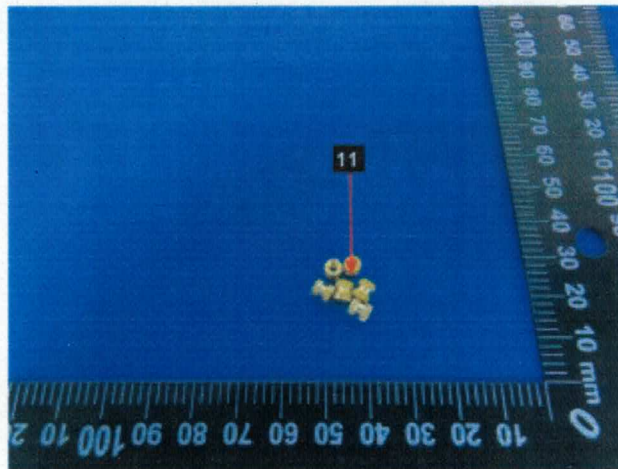


Exemption Declare

The test component **No. 11**, stated in the Test Report: **QHJ2206002801**
(**Applicant: HARDWARIO a.s.**, Sample name: **CHESTER**, Sample model:
CHESTER) is copper alloy, the lead of the sample comes from copper alloy,
while Lead as an alloying element in copper alloy containing up to 4% by weight
is exempted by RoHS (Directive 2011/65/EU of the European Parliament).
Hereby declare.



Pavel Hübner (CTO)

HARDWARIO a.s.

June 16, 2022